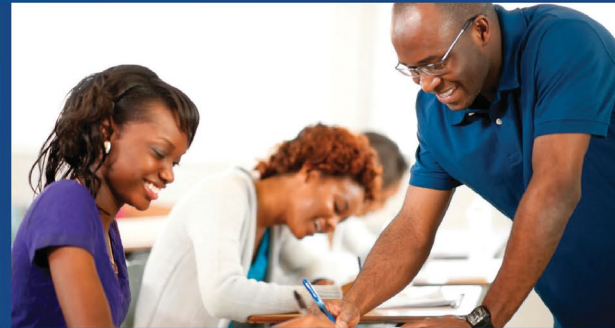


LOCAL PRESIDENTS ORIENTATION

Local Elections



Local Elections

This orientation should take no more than 15 minutes

Download the full Local Presidents Orientation series at <https://opseu.org/member-education/>



Local Elections

Visit the OPSEU Member Education webpage at <https://opseu.org/member-education/> and download the Local Presidents' Toolkit.

It includes all the information you need to hit the ground running as a Local President!



Steps for holding local elections



Local Elections

You are encouraged to seek the assistance of your Staff Rep or Executive Board Member in running your local elections.



Local Elections



Term of office

According to the OPSEU Constitution:

29.3.1 The term of office for Shop Stewards, Unit Stewards, and all Officers of LECs shall be not more than two years or less than one year and shall be deemed to be two years unless a Local adopts a bylaw to the contrary.



Local Elections

Steward elections

- Some locals will hold steward elections prior to electing for the positions of local president, vice-president, secretary, treasurer, chief steward.
- Some locals such as composites or multi-unit locals will elect their stewards at unit meetings prior to the general membership meeting.
- New stewards can be recruited and elected at any general membership meeting. You don't have to wait for the next general election meeting.
- The Local Executive Committee should be aware of any gaps in steward coverage that may exist and try to recruit new possible stewards.



Local Elections

Who can run for election to the Local Executive Committee (LEC)?

- Members wishing to be elected for the positions of president, vice-president, secretary, treasurer or chief steward must be elected as stewards first.
- Members wishing to run for election must be members in good standing. This means they must have signed a union card.



The elections process



Local Elections



Order of elections for Local Executive Positions

1. Local President
2. Vice-president
3. Secretary
4. Treasurer
5. Chief Steward (single unit locals)
6. Trustees (at least two, and they cannot be stewards)



Local Elections

The elections process step by step

1. As chair, begin by opening the floor for nominations for the first position up for election.
2. Nominations do not require a seconder.
3. Take minutes and keep record of who has been nominated and who the nominator is. This should be done so that all members can see the names: on a screen or flipchart.
4. Make 3 final calls for nominations. Once the third and final call is made, if there are no nominations – say: “Nominations are closed”.



Local Elections

The elections process step by step (continued)

5. Call out the names of the members who have been nominated in reverse order.
6. Ask each of the candidates to “stand” or “decline” the nomination, and mark the list accordingly.
7. Give all candidates an equal opportunity to address the members and answer questions.
8. Tile the doors: assign a non-member to stand guard at the doors to ensure no one leaves or enters the room during the election.



Local Elections

The elections process step by step (continued)

9. Distribute ballots. Non-members of the local (those who have not signed a union card) and guests do not get to vote.
10. Collect the completed ballots in a locked box.
11. Each candidate may designate a scrutineer to be present while the ballots are counted. A scrutineer can be any union member present, but not a candidate. Staff may not serve as scrutineers.
12. If there is a clear majority, meaning more than 50% of the valid ballots cast, that candidate has been elected.
13. If there is no clear majority, remove the candidate with the fewest votes and distribute a second ballot. Continue with rounds of ballots until a candidate is elected by a clear majority.



Local Elections

Finalizing the election process

- The Chair asks for a motion to destroy the ballots
- Make sure the minutes of the meeting are accurate
- Send a copy of the signed meeting minutes to your OPSEU regional office to update the local executive listing



Local Elections

Complaints arising from elections

1. Any member wishing to challenge the elections process must contact their Staff Rep as soon as possible after the elections.
2. The staff rep will contact their supervisor with the details of the complaint.
3. The supervisor will commence an inquiry into the complaint and determine further action if necessary.



Q and A



Local Elections

Q: If your local has a total of 21 to 200 members, how many people do you need to have at your meeting to reach quorum?



Local Elections

Q: If your local has a total of 21 to 200 members, how many people do you need to have at your meeting to reach quorum?

A: 10 members



Local Elections

Q: Can any member in good standing run for the position of Local President?



Local Elections

Q: Can any member in good standing run for the position of Local President?

A: No. A member must also be a Steward



Local Elections

Q: Who gets elected first: the Local President or the Local Vice-President?



Local Elections

Q: Who gets elected first: the Local President or the Local Vice-President?

A: The Local President



Local Elections

Download the OPSEU Reference Guide for Local Elections: <https://bit.ly/3c5yKKb>





MEMBER EDUCATION FORMATION DES MEMBRES



opseu.org/education sefpo.org/formation